



News update

Mentors' Trip to Uganda

Spotlight

Fellowship Tracker

Host institutions directory



Message from Eileen Chappell

Welcome to the May issue of *The Petri Dish*.

Travel seems to have been a key activity for many of the Fellows and mentors this month. News about their activities in London and Uganda can be seen on pages 2 – 4, and there is also a longer report from the Fellows taking training at DTU in Denmark. It was great to meet up with two of the Ghana Fellows in London last week. My thanks to them for taking the time even though it was late on a Friday afternoon and they had just finished their course assessment!

Seeing the photographs of what Fellows and mentors get up to on the Fellowship Scheme brings the programme to life and I know that there are many at Mott MacDonald and the UK Department of Health and Social Care that look forward to seeing them each month – please keep them coming.

If you have any comments on this or any part of *The Petri Dish* please send them to me at FlemingFellowshipScheme@mottmac.com.

Best wishes,

Eileen

Fleming Fellowship Scheme Coordinator

SEDRIC Global Meeting

“Mobilising surveillance and epidemiology data to inform patient care pathways”

The global meeting of the **Surveillance and Epidemiology of Drug Resistant Infections Consortium (SEDRIC)**, is being held at the Wellcome Trust Offices in London on **9th October 2019**.

SEDRIC brings together a range of international experts to share expertise and take action to tackle the gaps in drug-resistance infection surveillance and epidemiology. The global meeting will be an opportunity to engage in SEDRIC’s activities and help shape SEDRIC’s strategic agenda for 2020 and beyond.

They are offering **10 travel bursaries** to early career researchers in AMR surveillance and epidemiology from low- and middle-income countries to cover economy class travel and accommodation in London. Successful applicants may also be selected to participate in a series of 5-minute talks from 10 SEDRIC members on their research in AMR surveillance and epidemiology.

If you are interested in applying for the bursary, please contact sedric@wellcome.ac.uk for the application form.

For more information about SEDRIC please click [here](#).

Ghana Fellows in Denmark and London

Solomon Asante-Sefa (AMR Surveillance Human Health), Emmanuel Eshun (AMR Surveillance Animal Health), and Victoria Sedor (AMR Laboratory Animal Health) made their first trip over to their Host Institution, the Technical University of Denmark (DTU) this month, to attend a training course. Please see the attached report for a detailed account of their experiences and what they have learned so far.

Meanwhile Jennifer Bonnah (AMU Surveillance Human Health) and Mary Nkansa (AMU Surveillance Animal Health) have been attending training at the London School of Hygiene and Tropical Medicine (LSHTM) and met with Eileen Chappell (Fellowship Scheme Coordinator) and Katie Robertson (Fellowship Scheme Administrator).



Meeting the Ghana Fellows at LSHTM.
From left to right: Mary Nkansa; Jennifer Bonnah; Eileen Chappell; Katie Robertson

University of Edinburgh Mentors in Uganda

In Uganda, it was the Host Institution mentors’ turn to travel to meet their fellows in-country. Please see [the next two pages](#) for some photos of their trip.

Mentors' Trip to Uganda



Fleming Fellowship news bulletin - Issue 6

'A team of four Edinburgh mentors visited the Ugandan Fleming Fellows in April to mark the beginning of the fellowship programme there. A busy week of site visits and meetings was really informative as the fellowships now start in earnest. Visits to the beneficiary institutions and laboratories along with field visits helped to refine the fellows training needs, better understand the context of AMR in Uganda and to instigate the collaborative research project. It was great to spend more time with the fellows and to meet with a range of stakeholders, all with great enthusiasm for the Fleming Fellowship scheme and for tackling the problem of AMR in Uganda. An extremely useful and enjoyable visit for all involved.' Mark Bronsvort & Gavin Paterson – UofE mentors.



Discussing logistics and options for microbiology at the NADDEC laboratory Entebbe



The global reach of AMR: Fleming Fellow Merab with Edinburgh mentors Adrian, Kate and Gavin at the crossing of the equator on route to Mbarara to see the laboratory at the University hospital.



GeneXpert machines for tuberculosis diagnosis at the Mbarara University Hospital laboratory.

Trip to Uganda – continued



Fleming Fellowship news bulletin - Issue 6



AMR at the human-animal interface, this amazing energetic lady has been keeping livestock all her life.



Fellows and Edinburgh mentors meeting the owner of a piggery near Jinga.
From left to right: William Olum (AMU Surveillance HH); Michael Omodo (AMR Lab AH); Pig Farmer; Veterinary Officer; Adrian Muwonge (mentor); Merab Acham (AMR Surveillance AH).



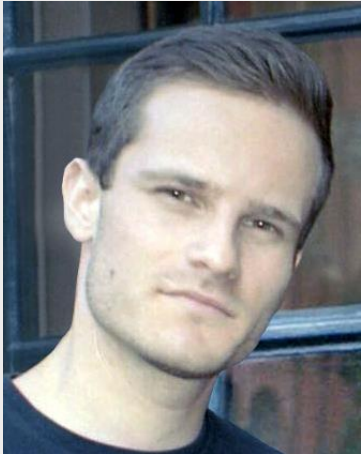
The Fellowship team visiting a small holder farm near Jinga.
From left to right: Merab Acham (AMR Surveillance AH); Veterinary Officer; District Veterinary Officer (Dr. Waiswa); Michael Omodo (AMR Lab AH); William Olum (AMU Surveillance HH); Ibrahim Mugerwa (AMR Lab HH).

Have a news story?

We love receiving your photos and travel reports. If you have any updates to share, please do get in touch at FlemingFellowshipScheme@mottmac.com

In each edition of the bulletin, we want to know more about the people that bring the Fleming Fund to life. This month, we would like to introduce you to LSHTM's newly appointed Fleming Fellowship Scheme Administrator...

Spotlight on... Andrew Gomez



Andrew recently started at LSHTM as the Fleming Fund Fellowship Administrator. He is involved in supporting the Fleming Fund fellowships placed at the school and plays a key managerial role in delivering the activities of the project.

Andrew has held various positions in the academic, cultural, and charity sectors – covering administration, education and project management, but also including work in communications and development. Before

joining LSHTM, he worked at the Victoria and Albert Museum as Projects Administrator and Assistant to the Director of Design. Andrew has expertise in financial management and project coordination, from working at large cultural institutions that have an international reach and operate across multiple sites. He is attracted to progressive educational organisations that promote civic well-being and social responsibility; “It is exciting to be supporting the Fleming Fellows activities through a symbiotic and creative collaboration between LSHTM (as host institution), beneficiary institutions (based in LMIC countries) and Fleming Fund delivery agent Mott MacDonald”.

Best part of your job?

I enjoy meeting and supporting the Fellows, as well as learning about the organisations they work for. It is rewarding being able to contribute to these exciting collaborations through the Fleming Fund, and support the important work being carried out

Favourite place in the world?

Kew Gardens, in London, in the spring.

Somewhere you'd love to visit?

Venice, during the *Biennale* (a contemporary visual art exhibition).

Favourite hobbies? Drawing, walking, and playing bass guitar.

Fun fact about yourself? As well as working at LSHTM, I am a practicing artist and regularly exhibit my artwork.



Kew Gardens in the spring

Want to feature next time?

Email FlemingFellowshipScheme@mottmac.com

GHANA

Host Institution: DTU & LSHTM

Fellows:

- GH01 – AMR Surveillance, Human Health: *Solomon Asante-Sefa*
- GH02 – AMR Surveillance, Animal Health: *Emmanuel Eshun*
- GH03 – Laboratory, Human Health: *Nicholas Dayie*
- GH04 – Laboratory, Animal Health: *Victoria Sedor*
- GH05 – AMU Surveillance, Human Health: *Jennifer Bonnah*
- GH06 – AMU Surveillance, Animal Health: *Mary Nkansa*

HI assigned	Fellowship applications open	Fellows selected & approved	Workshop completed
-------------	------------------------------	-----------------------------	--------------------

UGANDA

Host Institution: University of Edinburgh

Fellows:

- UG01 – AMR Surveillance, Human Health: *Joel Bazira*
- UG02 – AMR Surveillance, Animal Health: *Merab Acham*
- UG03 – AMR Laboratory, Human Health: *Ibrahim Mugerwa*
- UG04 – AMR Laboratory, Animal Health: *Michael Omodo*
- UG05 – AMU Surveillance, Human Health: *William Olum*
- UG06 – AMU Surveillance, Animal Health: *Joseph Kungu*

HI assigned	Fellowship applications open	Fellows selected & approved	Workshop completed
-------------	------------------------------	-----------------------------	--------------------

BHUTAN

Host Institution: Doherty Institute

Fellows:

- BT01 – AMR Surveillance, Human Health: *Tshering Dorji*
- BT02 – AMR Laboratory, Human Health: *Kinley Wangchuk*
- BT03 – AMC Surveillance, Human Health: *Thupten Tshering*
- BT04 – AMU Surveillance, Human Health: *Pem Chuki*
- BT05 – AMR Surveillance, Animal Health: *Ugyen Namgyel*
- BT06 – AMR Laboratory, Animal Health: *Puspa Maya Sharma*
- BT07 – AMC/U Surveillance, Animal Health: *Pema Tshewang*

HI assigned	Fellowship applications open	Fellows selected & approved	Workshop completed
-------------	------------------------------	-----------------------------	--------------------

LAOS

Host Institution: Mahidol University

HI assigned	Fellowship applications open	Fellows selected & approved	Workshop completed
-------------	------------------------------	-----------------------------	--------------------

VIETNAM

Host Institution: Erasmus MC

HI assigned	Fellowship applications open	Fellows selected & approved	Workshop completed
-------------	------------------------------	-----------------------------	--------------------

Fellowship Tracker – continued



Fleming Fellowship news bulletin - Issue 6

NEPAL

Host Institution: Doherty Institute

HI assigned	Fellowship applications open	Fellows selected & approved	Workshop completed
-------------	------------------------------	-----------------------------	--------------------

TIMOR-LESTE

HI assigned	Fellowship applications open	Fellows selected & approved	Workshop completed
-------------	------------------------------	-----------------------------	--------------------

SENEGAL

HI assigned	Fellowship applications open	Fellows selected & approved	Workshop completed
-------------	------------------------------	-----------------------------	--------------------

PAKISTAN

HI assigned	Fellowship applications open	Fellows selected & approved	Workshop completed
-------------	------------------------------	-----------------------------	--------------------

SRI LANKA

HI assigned	Fellowship applications open	Fellows selected & approved	Workshop completed
-------------	------------------------------	-----------------------------	--------------------

NIGERIA

HI assigned	Fellowship applications open	Fellows selected & approved	Workshop completed
-------------	------------------------------	-----------------------------	--------------------

PAPUA NEW GUINEA

HI assigned	Fellowship applications open	Fellows selected & approved	Workshop completed
-------------	------------------------------	-----------------------------	--------------------

TANZANIA

HI assigned	Fellowship applications open	Fellows selected & approved	Workshop completed
-------------	------------------------------	-----------------------------	--------------------

Fellowship Tracker – continued



Fleming Fellowship news bulletin - Issue 6

ZAMBIA

HI assigned	Fellowship applications open	Fellows selected & approved	Workshop completed
-------------	------------------------------	-----------------------------	--------------------

KENYA

HI assigned	Fellowship applications open	Fellows selected & approved	Workshop completed
-------------	------------------------------	-----------------------------	--------------------

INDIA

HI assigned	Fellowship applications open	Fellows selected & approved	Workshop completed
-------------	------------------------------	-----------------------------	--------------------

SIERRA LEONE

HI assigned	Fellowship applications open	Fellows selected & approved	Workshop completed
-------------	------------------------------	-----------------------------	--------------------

ESWATINI

HI assigned	Fellowship applications open	Fellows selected & approved	Workshop completed
-------------	------------------------------	-----------------------------	--------------------

MALAWI

HI assigned	Fellowship applications open	Fellows selected & approved	Workshop completed
-------------	------------------------------	-----------------------------	--------------------

ZIMBABWE

HI assigned	Fellowship applications open	Fellows selected & approved	Workshop completed
-------------	------------------------------	-----------------------------	--------------------

BURKINA FASO

HI assigned	Fellowship applications open	Fellows selected & approved	Workshop completed
-------------	------------------------------	-----------------------------	--------------------

INDONESIA

HI assigned	Fellowship applications open	Fellows selected & approved	Workshop completed
-------------	------------------------------	-----------------------------	--------------------

If your institution is interested in taking on Fellowships in a particular country from the list above, please get in touch at FlemingFellowshipScheme@mottmac.com

Host institutions directory



Fleming Fellowship news bulletin - Issue 6

On this page are the current Host Institutions for Professional Fellows, with the regions they cover and their areas of expertise.

Note: It would be additionally helpful if Host Institutions could provide us with an up-to-date list of countries where you have a strong presence, and send it to

FlemingFellowshipScheme@mottmac.com

Regions and proposed countries

SE - South East Asia

Laos, Vietnam, Pakistan, Timor-Leste, Papua New Guinea

SA - South Asia

Nepal, Bhutan, India, Sri Lanka, Indonesia, Bangladesh

EA - East and Southern Africa

Uganda, Tanzania, Kenya, Zambia, Malawi, eSwatini, Zimbabwe

WA - West Africa

Ghana, Nigeria, Sierra Leone, Senegal, Burkina Faso

Sector expertise

HL - Laboratory, Human Health

AL - Laboratory, Animal Health

HS - AMR Surveillance, Human Health

AH - AMR Surveillance, Animal Health

HU - AMU Surveillance, Human Health

AU - AMU Surveillance, Animal Health

Host institution	Regions				Sector expertise					
	WA	EA	SA	SE	HL	AL	HS	AS	HU	AU
University of Edinburgh	✓	✓	✓	✓	✓	✓	✓	✓	✓	✓
Oxford University Clinical Research Unit				✓	✓	✓	✓	✓	✓	✓
National Institute for Communicable Diseases	✓	✓			✓	✓	✓	✓	✓	✓
Technical University of Denmark, National Food Institute	✓	✓	✓	✓		✓	✓	✓		✓
School of Public Health, The University of Hong Kong				✓	✓	✓	✓	✓	✓	✓
Fondation Merieux	✓				✓	✓	✓	✓	✓	✓
London School of Hygiene and Tropical Medicine	✓	✓	✓	✓	✓		✓		✓	✓
Erasmus University Medical Centre			✓	✓	✓	✓	✓	✓	✓	✓
The Peter Doherty Institute of Infection and Immunity	✓		✓	✓	✓	✓	✓	✓	✓	✓
Brigham and Women's Hospital (WHONET)	✓	✓	✓	✓	✓		✓	✓	✓	
American Society for Microbiology	✓	✓	✓	✓	✓	✓	✓	✓		
Mahidol University			✓	✓	✓	✓	✓	✓	✓	✓
International Livestock Research Institute	✓	✓	✓	✓		✓		✓	✓	✓
African Society for Laboratory Medicine	✓	✓			✓	✓	✓	✓	✓	✓
Aga Khan University		✓	✓		✓		✓			
Public Health England	✓	✓	✓	✓	✓		✓		✓	
Association Pasteur International Network	✓	✓		✓	✓	✓	✓		✓	✓